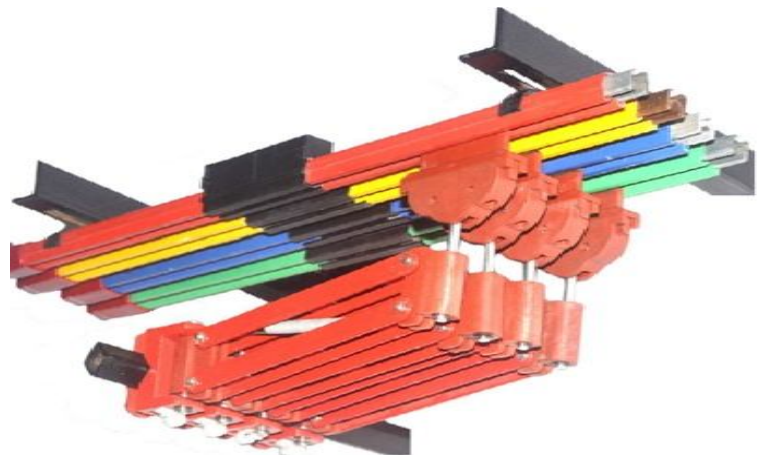


Anand Systems Engineering Pvt . Ltd.



**CHANGING THE WAY YOU
THINK ABOUT MOBILE
ELECTRIFICATION**

**MANUFACTURER OF ALL ELECTRICAL
CONTROL GEARS FOR EOT CRANE**

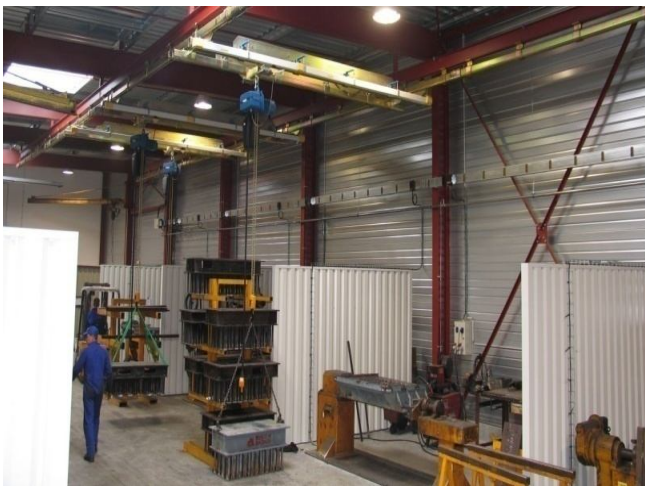
www.anansystem.in

➤ Introduction

We take this opportunity to introduce ourselves "ANAND SYSTEMS ENGINEERING PVT. LTD." As leading manufacturer of electrical control gears suitable for different types of EOT cranes in India. We are renowned both for the quality of the products as well as strategy of our after sales services.

Anand systems is an integrated an integrated association of Engineers. Project Management Specialists and Designers possessing specialized experience in Material handling Industry specially EOT Cranes.

The company can accept full engineering responsibility for a project with respect to control gear from preliminary market studies to completion of project & operational management -or it can handle only one specific phase to supplement the special needs of the client's own engineering staff.



Anand Systems has established a proud reputation in the market place, as a quality conscious supplier of customer specific products. We support and service a demanding customer base in the EOT Cranes, Hoist & other Mobile Machinery with an emphasis on achieving world-class quality at competitive prices

Our Customers are EOT Crane Manufacturer, Power Houses, Steel Manufacturers, Shipyard, Ports, Railways, Heavy Industries, Foundries, Mines, Paper and Pulp producers, Cement industry, Smelters, Steel Mills and all Engineering Industries.

All the material used in our products is unique in terms of their look, quality and durability. We are committed to provide our consumer with best possible service focusing on overall satisfaction.

We wish to highlight the salient features of our manufacturing division;

The design of the control components is based on original German design and it constantly upgraded as per the latest European standards.

The team responsible has more than 20 years of experience in various fields of engineering, manufacturing, and servicing and performance evaluation.

Quality assurance plan is prepared based on international norms and is strictly followed during all the stages of manufacturing. All the products are individually tested to ensure zero failure at site.

The products are compatible with all other imported and India makes and are therefore idea substitute for replacement.

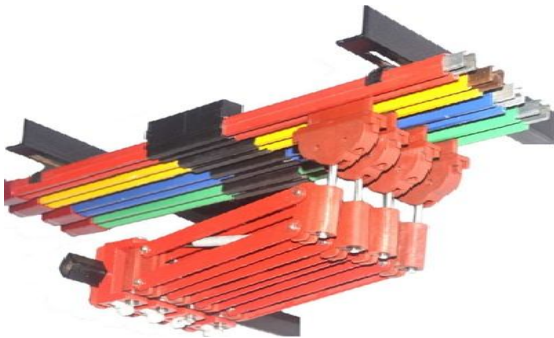
All our products are as per stringent IS standards.

The Proven design, superior quality, Prompt and efficient after sales service through the regional network – are all assured by the professional management team who has been serving large corporate clients satisfactorily over the last several years.

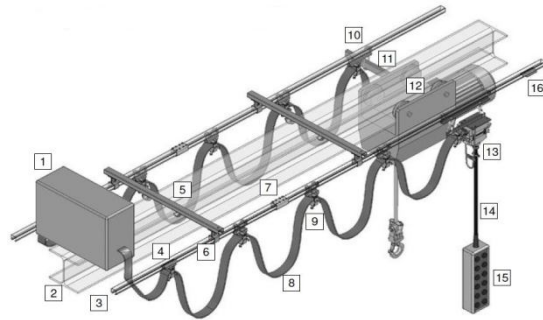


➤ List of products manufacturing by us

Energy and data transmission for various application

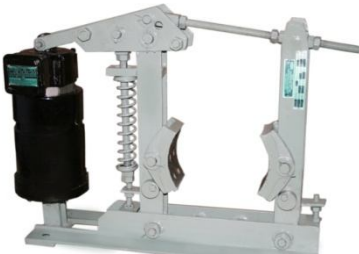


DSL Shrouded Conductor System



C - Rail Festooning Systems

Brakes for various application



Thruster Brakes



Solenoid Brake



Disc Brake

Master controller, resistance Box for various application



Master Controller



Resistance Box / DBR



Cross Bar Switch



Light Duty Limit Switch

Limit Switches for various application



Worm Drive



Rotary Gear



Lever Type



Counter Weight



Grab Differential

➤ List of products manufacturing by us

Power cables & control panel for various application



Flat Cable



Round Cable



Control Panels

Safety switches for various application



Anti Collision Switch



Pendent Push Button



DSL Indicating Lamp

Radio remote control systems for various application



Sport



IT 301/302



IT 401/402



IT 401D/402D



IT 501/502



F 24



Star



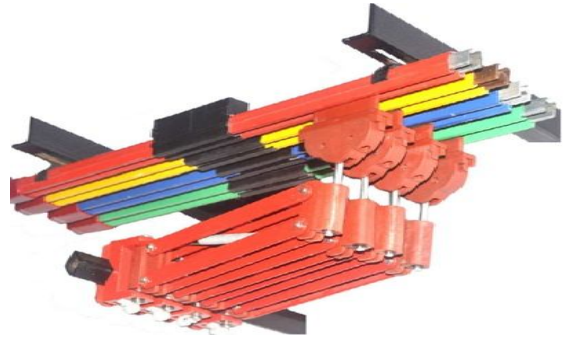
Master

➤ Energy and data transmission for various application

➤ DSL shrouded conductor systems

➤ Introduction

Conductor Bar are used for power transformation conductor rail provide a safe & economical supply of electric power for track guided mobile machinery. Single pole individually insulated conductors. ideally used for EOT cranes etc.



➤ Great Reason to use insulated conductor bar !

@ Safety : Insulated conductor bar, touch proof, finger safe, no live part exposed, easy installation, no misalignment, common spare parts, rigidity, easy maintenance, aesthetic.

➤ Main Application

- @ Cranes & Hoist
- @ Monorails
- @ Automated Storage System
- @ Amusement Park Rides
- @ Transfer Car
- @ Quenching / Pusher Car For Coke Oven

➤ Industries Uses

- @ Crane Mfg.
- @ Steel Plants
- @ Heavy Industries
- @ Amusement Park
- @ Coke Oven
- @ Textile Mills
- @ Waste Water Treatment Plant

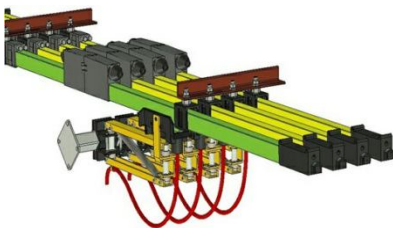
➤ Insulated Conductor Bar Systems



Safelink M (Pin Type)
100Amp to 250Amp



Safelink W (Bolted Type)
60Amp to 400Amp



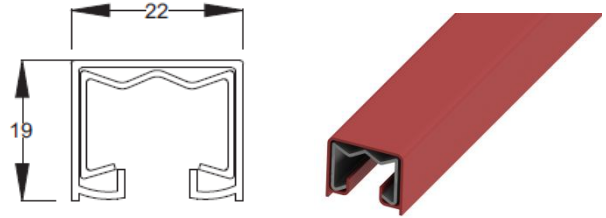
Safelink V (Heavy Bar)
500Amp to 2000Amp



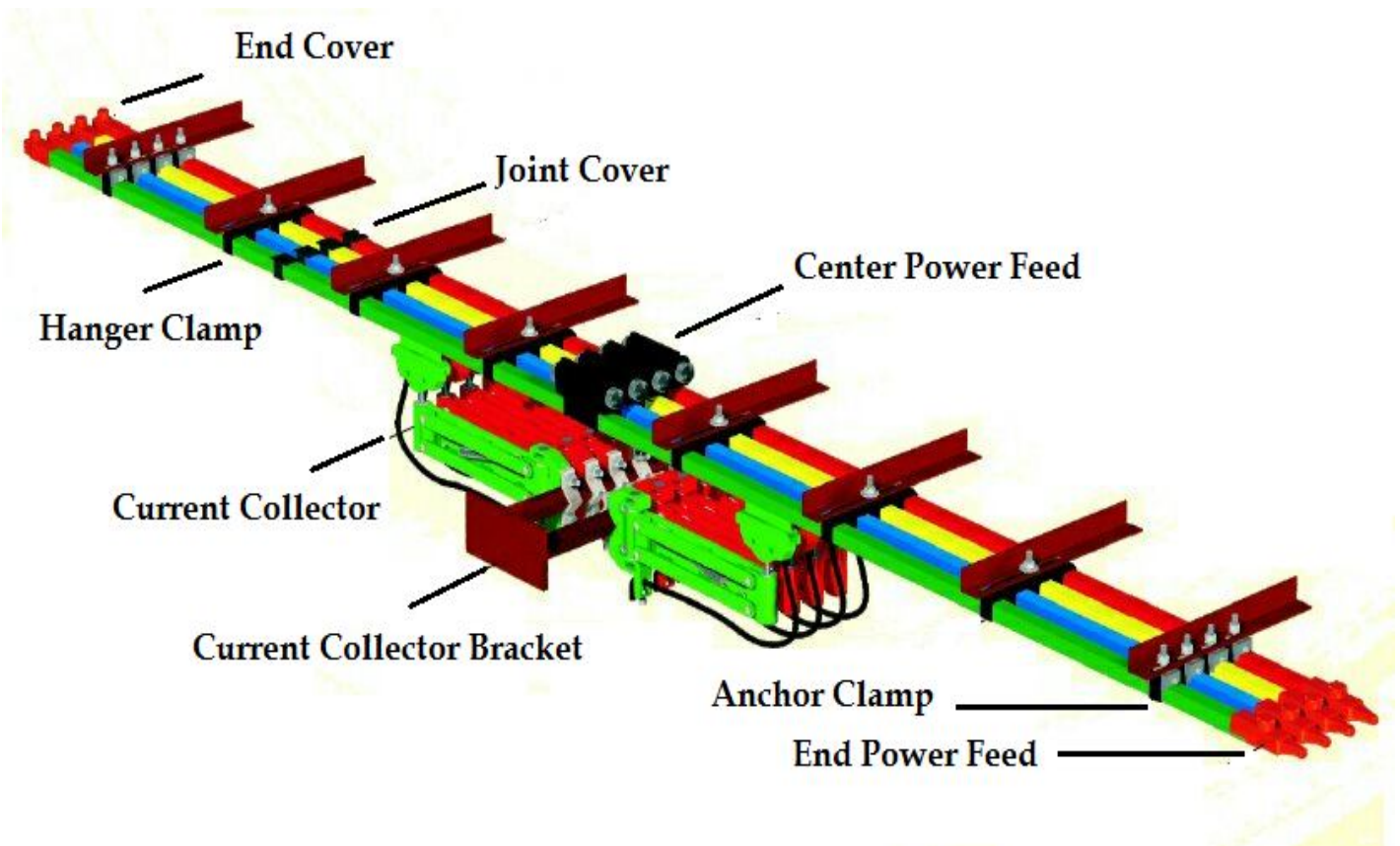
Safelink E (Enclosed Type)
40Amp to 200Amp



➤ Safelink - M



➤ Pin joint conductor system



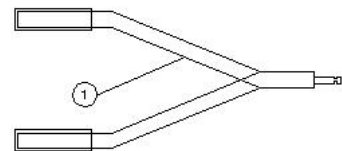
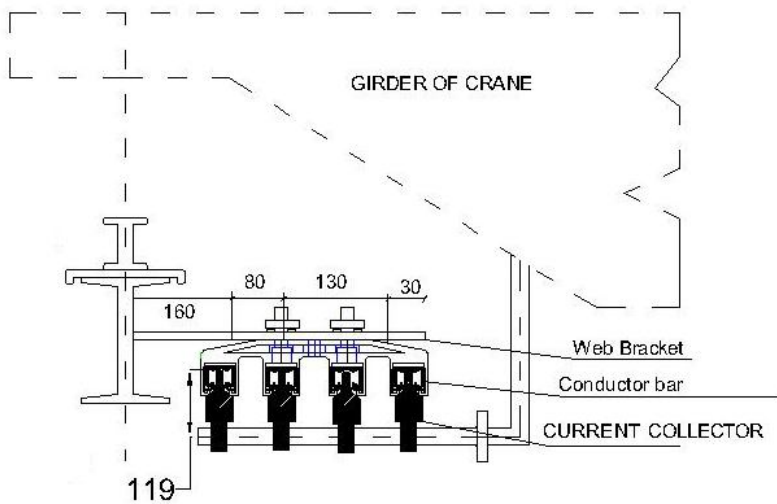
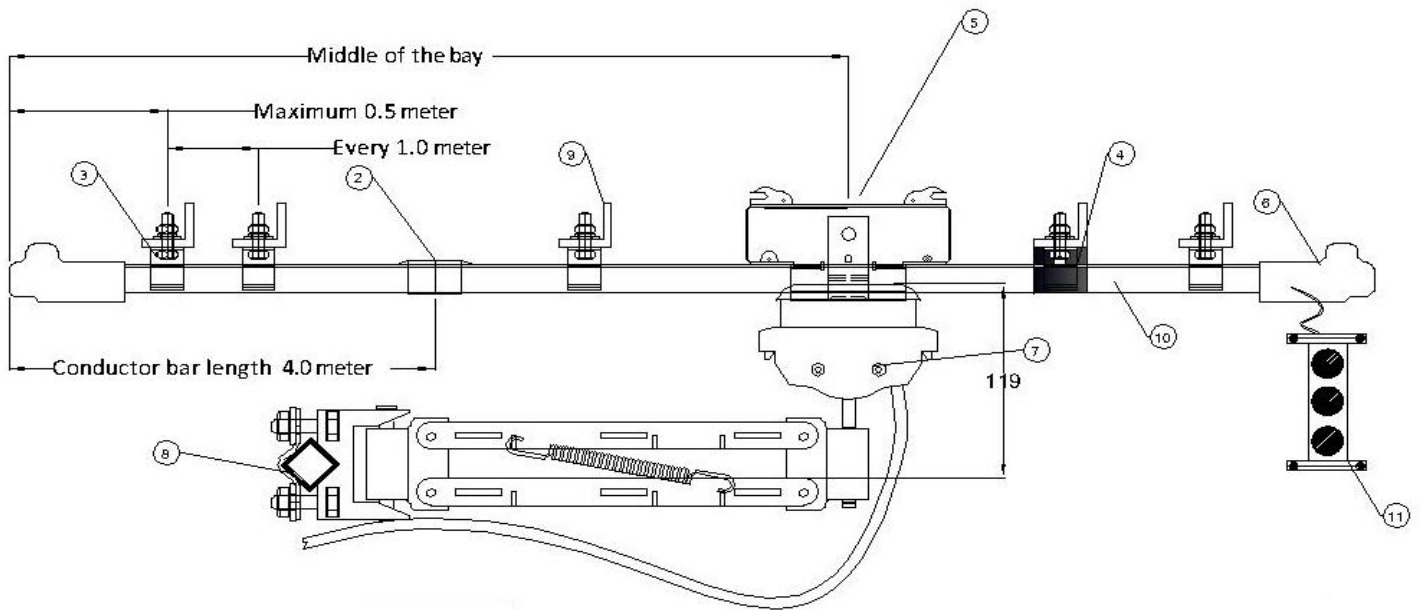
RANGE DETAILS:

100/125- GALVANISED STEEL

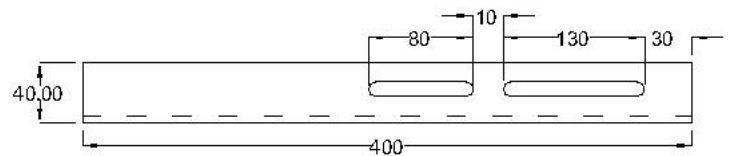
160/250/315-COPPER

Changing The Way You Think About Mobile Electrification

➤ **System arrangement for SAFELINK – M (10Amp to 315Amp)**



Jointing Tools



Web Bracket

Sr. No.	Description	Sr. No.	Description
1	Jointing Tools	6	End Cover
2	Joint Cover	7	Current Collector
3	Hanger Clamp	8	Current Collector Bracket
4	Anchor Clamp	9	Web Bracket
5	Center Power Feed	10	Conductor Bar

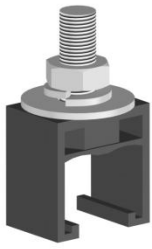
➤ **Technical data safelink- M type**

CONDUCTOR BAR	GALVANIZED IRON			COPPER	
	60A	100A	125A	160A	250A
Nominal Current					
DC Resistance (Ω /M) +35 °C	0.003584	0.00286	0.00193	0.000342	0.000274
Impedence (Ω /M) +35 °C	0.003604	0.00289	0.00196	0.000364	0.0003
Support Pitch	Standard	1000MM			
	Lateral	1.125mm			
Protection Class (Finger Safe)	IP21				
Conductor Joint	Pint Type				
CONDUCTOR BAR COVER					
Standard Insulation		PVC		PVC	
Maximum System Working Temperature		80°C		80°C	
Flame Test		Self Extinguishing		Self Extinguishing	
Colour		RYBG		RYBG	
INSTALLATION					
Hanger Clamps		1pole / 4pole		1pole / 4pole	
Power Feeding		At joint or at any location		At joint or at any location	
Installation suitable for		Indoor / outdoor		Indoor / outdoor	
OTHER ACCESSORIES					
Isolating sections, high temp sleeves for 120 °C		Available		Available	

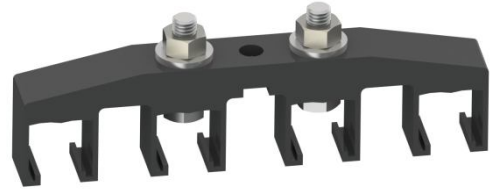
➤ **Features of safelink M pin type DSL**

- ❖ Insulated conductors are touch proof, no exposed live parts to contacts.
- ❖ Quick & easy installation with 1 pole and 4 pole hanger.
- ❖ 100 to 315 amps conductor in same standard.
- ❖ 100 & 125 amps in galvanized steel
- ❖ 160, 250, 315 amps in copper
- ❖ Each bar length 04 meter.
- ❖ Cover designed to shed water and dust.
- ❖ Joint cover provides total protection of joints.
- ❖ Enclosed wiring for connection on collectors for safe and simple installation.
- ❖ No expansion joints upto 150 meters long system.
- ❖ Slide in slot features for hanger supports to eliminate mis-alignment.
- ❖ Track configuration: straight or curved.
- ❖ Operating speed upto 200 meters / minute.
- ❖ High voltage test with stand 1 minute flashover 2.5kv/7.5kv
- ❖ Maximum system voltage 500 V ac / 600 V dc.

➤ **Standard accessories for SAFELINK – M Type (100Amp to 315Amp)**



Single Pole Hanger Clamp



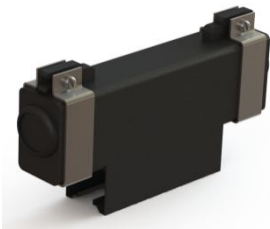
Four Pole Hanger Clamp



Anchor Clamp



Joint Cover



Center Power Feed



Jointing Tools



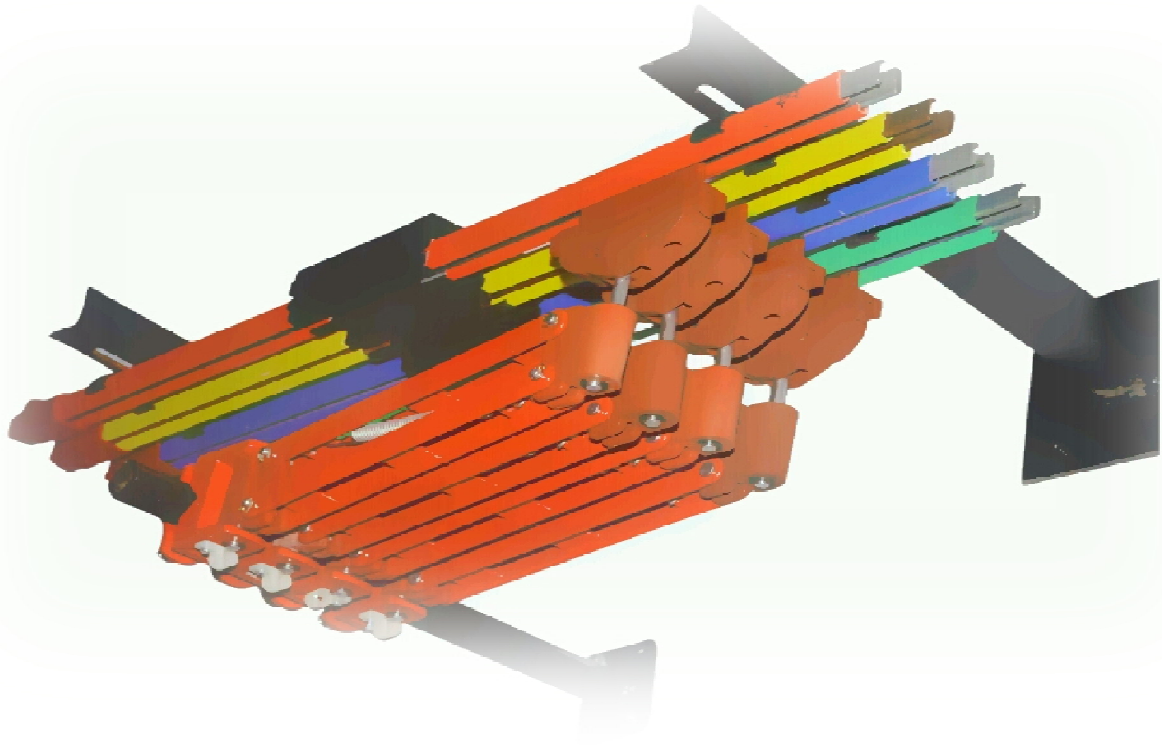
End Cover



End Power Feed

SAFELINK W

Bolted Type DSL Shrouded Conductor



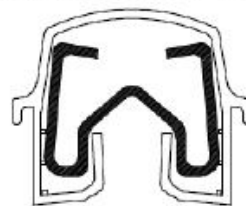
RANGE DETAILS:

60/100/125- GALVANISED STEEL

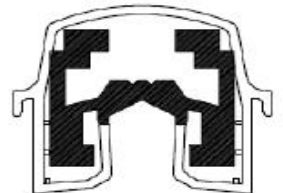
160/250/400-COPPER

200/315-ALUMINIUM/SS

Galvanised iron / Copper

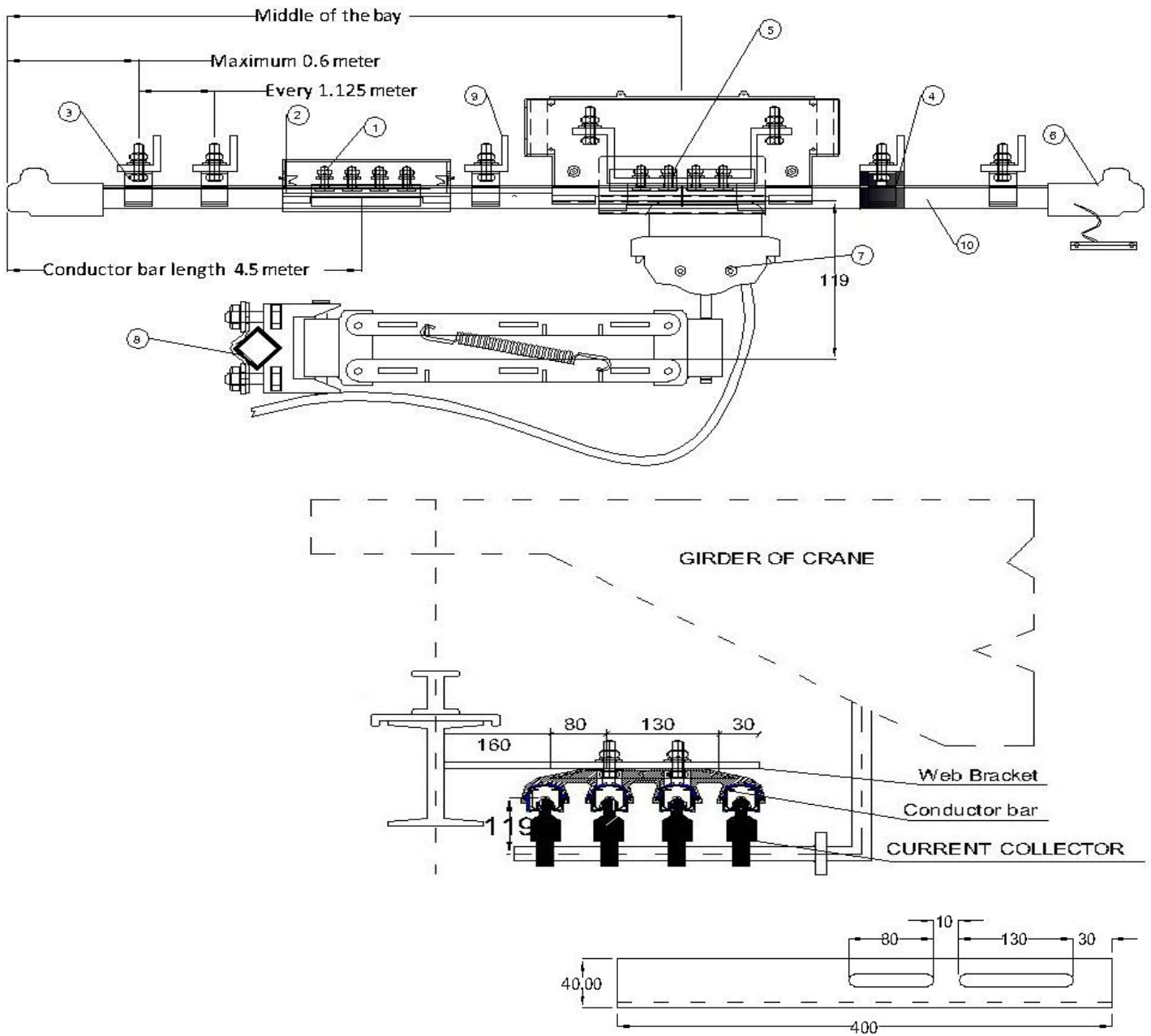


Aluminum



Changing The Way You Think About Mobile Electrification

➤ **System arrangement for SAFELINK – W (60Amp to 400Amp)**



Sr. No.	Description	Sr. No.	Description
1	Joint Clamp	6	End Cover
2	Joint Cover	7	Current Collector
3	Hanger Clamp	8	Current Collector Bracket
4	Anchor Clamp	9	Web Bracket
5	Center Power Feed	10	Conductor Bar

➤ **Technical data safelink- W type**

CONDUCTOR BAR	GALVANIZED IRON			COPPER			ALUMINUM WITH STAINLESS STEEL		
Nominal Current	60A	100A	125A	160A	250A	400A	200A	315A	400A
DC Resistance (Ω/M) +35 °C	0.00358	0.002867	0.001933	0.000342	0.000274	0.000184	0.000301	0.000261	0.000199
Impedence (Ω/M) +35 °C	0.0036	0.002891	0.001968	0.000364	0.0003	0.000221	0.000325	0.000288	0.000234
Support Pitch	1000mm								
Standard Lateral Curve	1.125mm								
	500mm								
Protection Class (Finger Safe)	IP21								
Conductor Joint	Bolted Type								
CONDUCTOR BAR COVER									
Standard Insulation	PVC								
Maximum System Working Temperature	80°C								
Flame Test	Self Extinguishing								
Colour	RYBG								
INSTALLATION									
Hanger Clamps	1pole / 4pole								
Power Feeding	At joint or at any location								
Installation suitable for	Indoor / outdoor								
OTHER ACCESSORIES Isolating sections, High temp sleeves for 120 °C	Available								

➤ **Features of safelink W bolted type DSL**

- ❖ Insulated Conductors are touch proof, no exposed live parts to contacts.
- ❖ Quick & Easy Installation with 1 Pole and 4 Pole Hanger.
- ❖ 60 to 400 Amps Conductor in same standard.
- ❖ 60, 100 & 125 Amps in Galvanized Steel
- ❖ 200,315 & 400 Amps in Aluminium/S.S.
- ❖ 160,250, & 400 Amps in Rolled Copper.
- ❖ 4.5 Meters Bar Length.
- ❖ Cover Designed to shed water and dust.
- ❖ Joint Cover provides total protection of joints.
- ❖ Enclosed Wiring for connection on collectors for safe and simple installation.
- ❖ No Expansion Joints upto 150 Meters long System.
- ❖ Slide in slot features for hanger supports to eliminate mis-alignment.
- ❖ Track Configuration: Straight or Curved.
- ❖ Operating speed upto 200 Meters / minute.

➤ Standard accessories for SAFELINK – W Type (60Amp to 400Amp)



Single Pole Hanger Clamp



Four Pole Hanger Clamp



Anchor Clamp



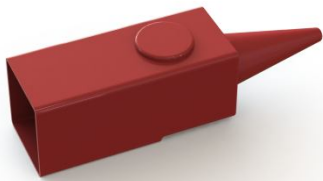
Joint Cover



Center Power Feed



Joints



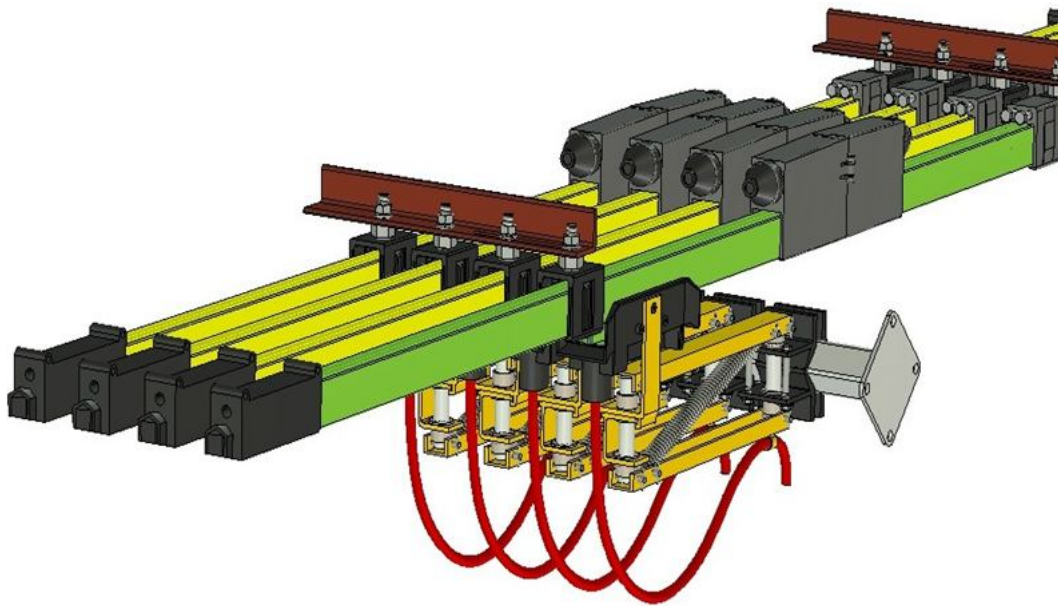
End Cover



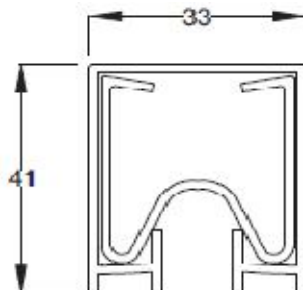
End Power Feed

SAFELINK V

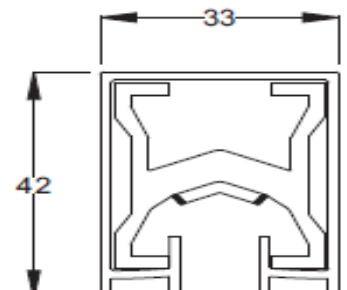
V Type Heavy DSL Shrouded Conductor



COPPER



ALUMINUM



RANGE DETAILS:

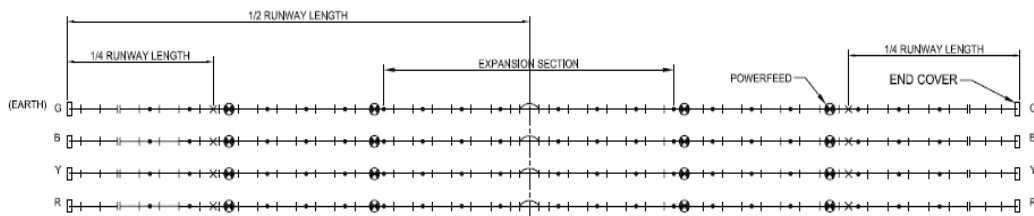
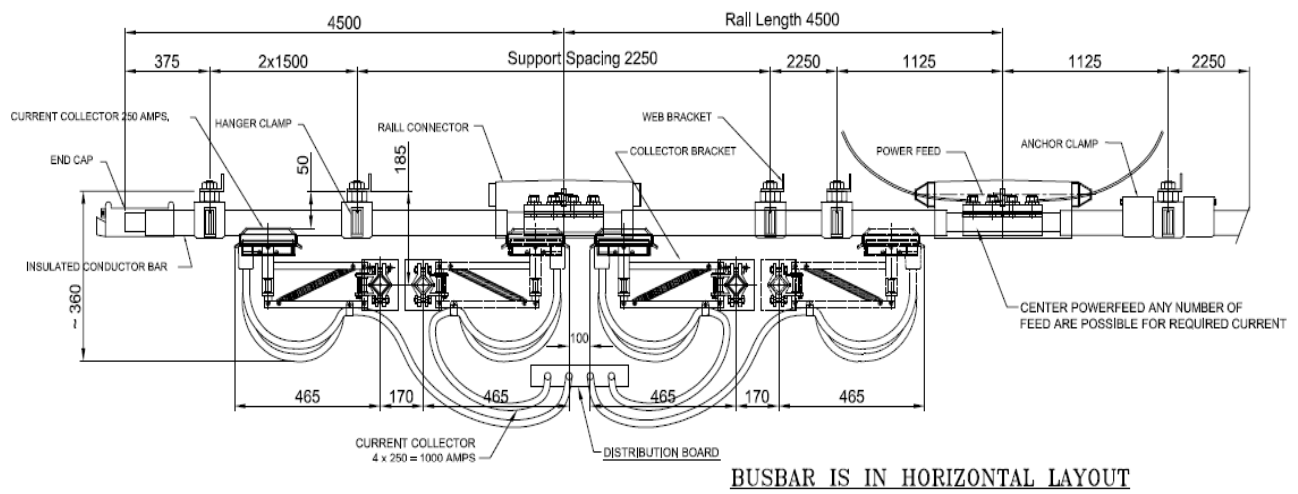
500 Amp to 1250 Amp – Copper

500 Amp to 1250 Amp – Aluminum

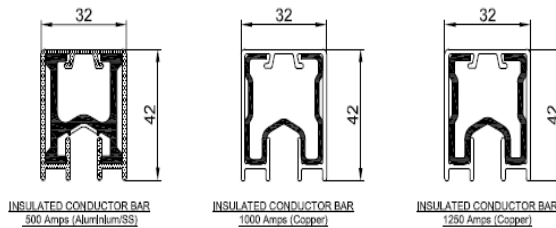
Changing The Way You Think About Mobile Electrification

SAFELINK -V

System Arrangement Drawing



LEGEND	
CONDUCTOR	
END COVER	
HANGER CLAMP	
ANCHOR CLAMP	
POWER FEED	
I-EXPN. JT.	
ISOLATING SECTION	
INDICATOR LAMP	
JUNCTION BOX	



REVISION		DATE	DRAWN	MATERIAL	TOTAL WT.
SYSTEM ARRANGEMENT					
Anand Systems					
TRACED					
CHECKED					
APPROVED					

➤ Features of safelink V Type Heavy Bar DSL

- ❖ Insulated Conductors are touch proof, no exposed live parts to contacts.
- ❖ Quick & Easy Installation with 1 Pole Hanger.
- ❖ 500 to 1250 Amps Conductor in same standard.
- ❖ 500 & 1250 Amps in Aluminum with Stainless Steel and Copper
- ❖ 4.5 Meters Bar Length.
- ❖ Cover Designed to shed water and dust.
- ❖ Joint Cover provides total protection of joints.
- ❖ Enclosed Wiring for connection on collectors for safe and simple installation.
- ❖ No Expansion Joints upto 150 Meters long System.
- ❖ Slide in slot features for hanger supports to eliminate mis-alignment.
- ❖ Track Configuration: Straight or Curved.
- ❖ Operating speed upto 200 Meters / minute.

➤ **Technical data safelink- V type**

CONDUCTORBAR	COPPER					ALUMINUM WITH STAINLESS STEEL		
Nominal Current	500A	800A	1000A	1250A	2000A	500A	800A	1000A
Resistance R (For DC) at 35°C (Ω/m)	0.000104	0.000057	0.000033	0.000022	0.000011	0.000097	0.000074	0.000051
Impedence Z (For DC) at 35°C (Ω/m)	0.000161	0.000136	0.000127	0.000094	0.000061	0.000157	0.000144	0.000137
Maximum Ambient Temperature for 100% Duty Cycle	71.1°C					121°C		
Support Pitch Standard	2.250mm							
Lateral	1500mm							
Protection Class (Finger Safe)	IP21							
Conductor Joint	Bolted Type							
CONDUCTORBAR COVER								
Standard Insulation	PVC							
Dielectric Strength	180 kv/cm							
Maximum System working Temperature	80°C							
Flame Test	Self Extinguishing							
Colour	YYYYG							
INSTALLATION								
Hanger Clamps	1 Pole							
Power Feeding	At joint or at any location							
Installation suitable for	Indoor / outdoor							
OTHER ACCESSORIES Isolating Sections High temp. sleeves For 120 °C	Available							

➤ Standard accessories for SAFELINK – V Type (500Amp to 1250Amp)



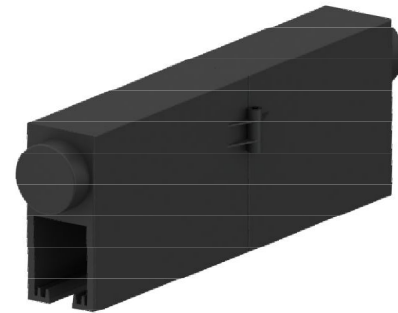
Hanger Clamp



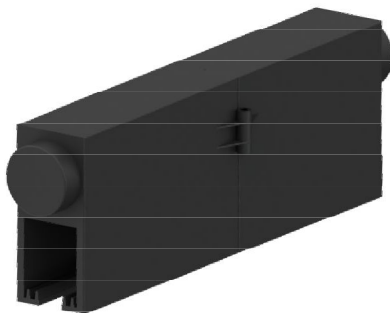
Anchor Clamp



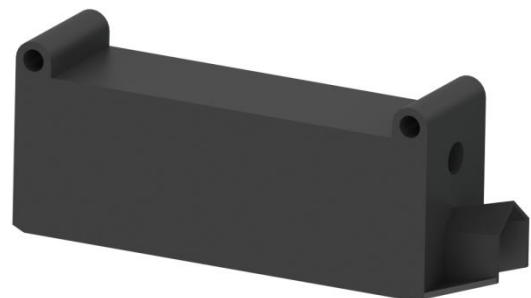
Joint



Joint Cover



Center Power Feed



End Cover

Anand Systems Engineering Pvt. Ltd.

116 Acharya Industrial Estate, Tejpal Compound, Andheri Kurla Road, Sakinaka Mumbai – 400072.

Tel No. 022-28502162, Email. anand@anandcontrol.com, Web. www.anandsystem.in